

# SCOPE 1

## Direct Emissions

Greenhouse gas emissions which originate from sources either owned or controlled by the company directly.

This includes emissions which get released during industrial processes and on-site manufacturing.

### Upstream

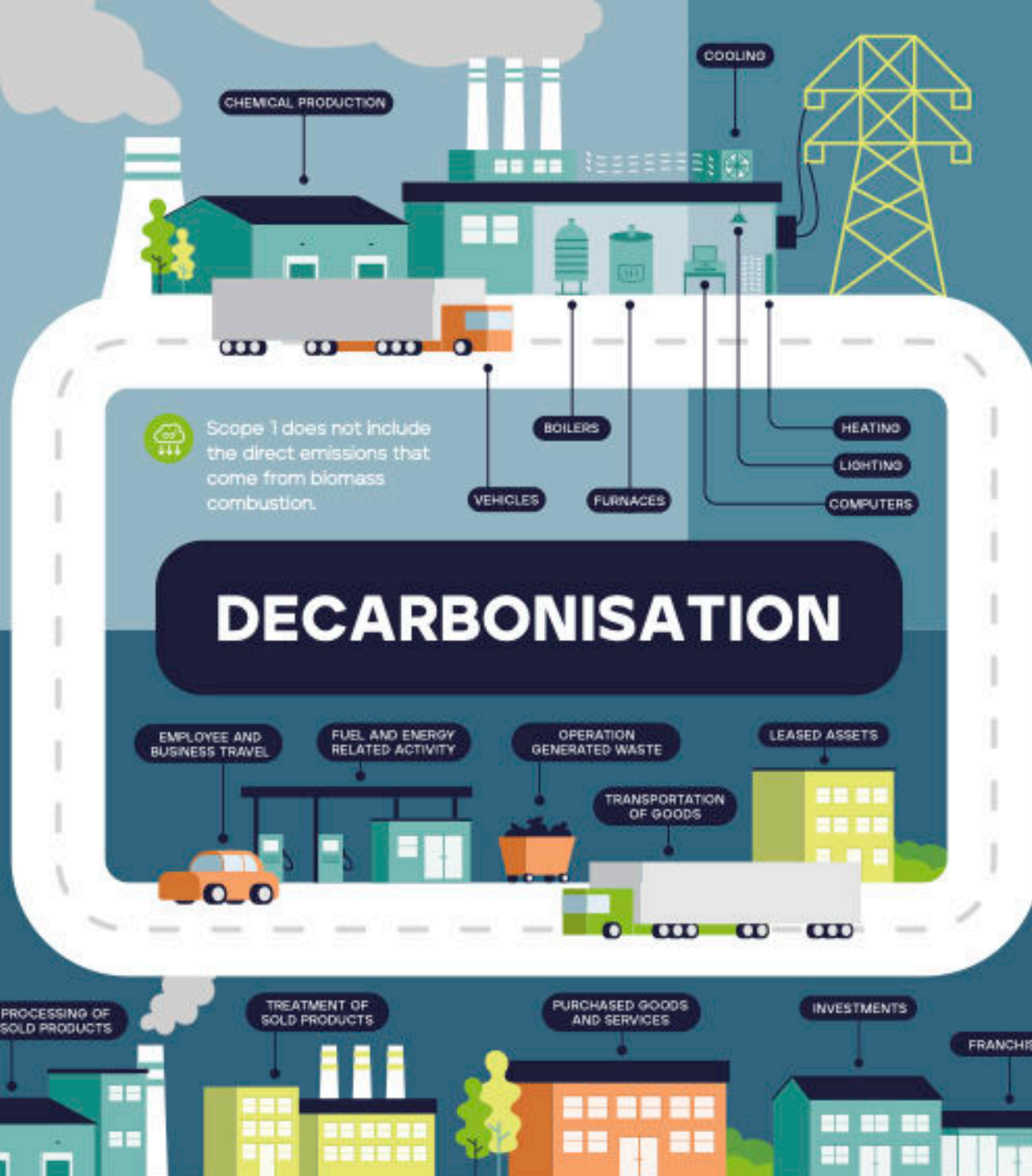
All the materials that are required, and the process which need to take place before a business can begin its operations.

# SCOPE 3

## Supply Chain Emissions

Greenhouse gas emissions that occur throughout the entire lifecycle of a product /service, beyond a company's direct operations.

These emissions encompass various stages of the supply chain, including production, distribution, transportation, and disposal.

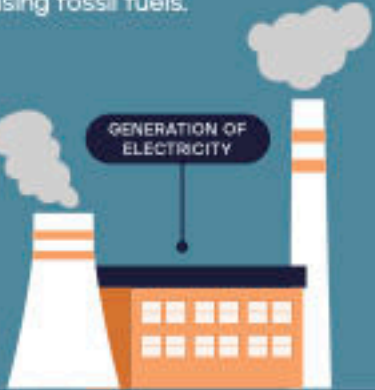


Scope 1 does not include the direct emissions that come from biomass combustion.

# SCOPE 2

## Indirect Emissions

Emissions of greenhouse gases which result from the production of purchased electricity, which is consumed by the company. Much of the electricity purchased through the grid is still generated using fossil fuels.



### Downstream

All the materials that are required, and the process which need to take place before a business can begin its operations.



Scope 3 covers the consequential emissions produced by a company.

